



BSM Scan M5

Create Maximum Value
For Every User



Chengdu Besmile Medical Technology Co., Ltd.
www.bsmdental.com
T: +86-28-85317108
E: info@cdbesmile.com

Besmile Dental America Inc.
20311 Valley Blvd, Suite# I, Walnut, CA 91789
T: (626) 921-5798
E: admin@bsmdentalus.com





GETTING TO KNOW US

Besmile is a leading company specializing in R&D, manufacturing, sales and service of CAD/CAM materials, digital dental equipment and implant systems with headquarters in Chengdu, China and a subsidiary in California, USA.

With more than 10 years of experience in implantology and prosthetics, Besmile has become a total dental solution provider in digital dentistry, effortlessly striving to create the best smiles for dental technicians, dentists, and patients, etc with advanced technology.



CAD/CAM

A dedicated manufacturer of dental CAD/CAM materials and equipment



Digital Solutions

A digital dental solution provider in fields of implantology & prosthetics



100+Countries

Our products have reached over 100 countries & regions.



1000+Partners

We have built lasting partnerships with over 1000 partners worldwide.



Compact and Lightweight

Weighs only 138g with dimensions of 221×27×25mm.



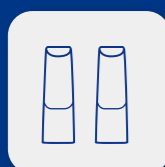
Faster and More Precise

Achieves ultra-fast scanning in just 1 minute with 7 μ m ultra-high accuracy.



Plug and Play

No power adapter required, featuring a newly designed tip.



Elegant Design in White & Silver

Ergonomically designed, withstanding 50–100 autoclaving cycles.





Whisper-Quiet Operation

Weighs only 138g with dimensions of 221×27×25mm.



One-Button, Infinite Control

Effortless control meets intuitive innovation. This design streamlines your interaction with the product—one press replaces the need for cumbersome mouse clicks.



Motion Sensing Technology

This cutting-edge feature enables touchless control of your devices, ensuring a more hygienic operating environment.



Anti-Fog Technology

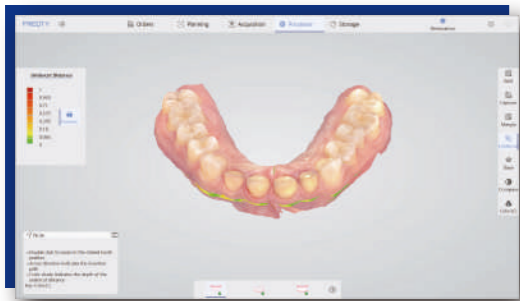
Our advanced instant heating technology eliminates the frustration of fogged lenses, ensuring a clear view at all times.

BSM
MS
Socair

Ergonomic
Efficient
Innovative

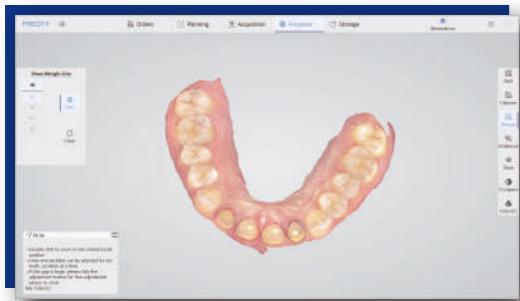


SOFTWARE FEATURES



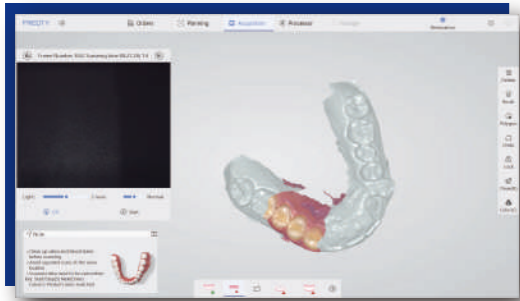
Undercut Check

Auxiliary confirmation in place, colour gradient indicates undercut, accurate prediction, and improves the communication efficiency between doctors and technicians.



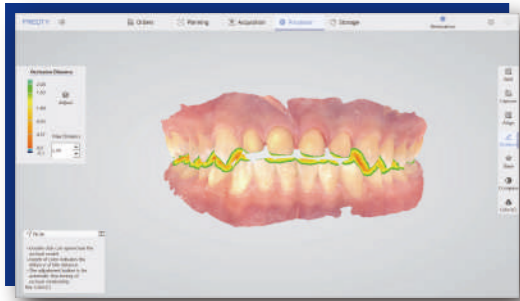
Margin Line Drawing

Draw accurate and clear margin lines, linking doctors and technicians to reduce rework.



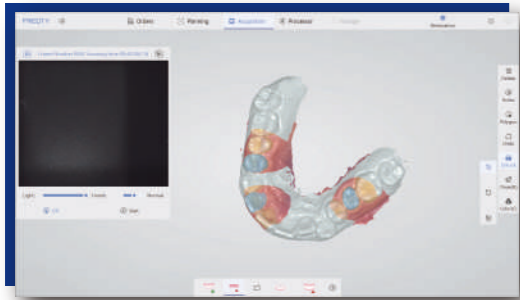
Pre-preparation Scan

Obtain pre-preparation tooth state, retain bite data, and reshape the original good teeth.



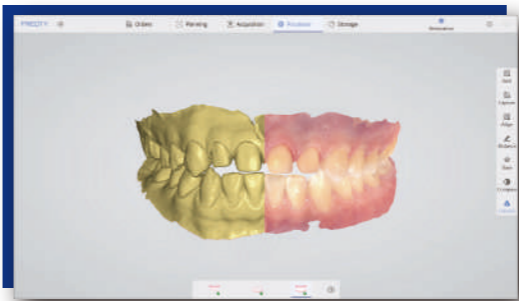
Bite Check

Color gradient indicates distance, accurately judges the restoration distance and assists in improving the effect of tooth preparation.



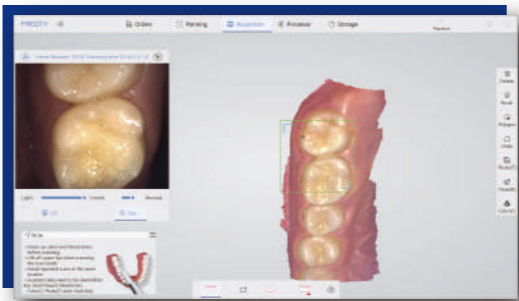
Lock Data

Locks the tooth position to prevent data loss and reject excess data interference.



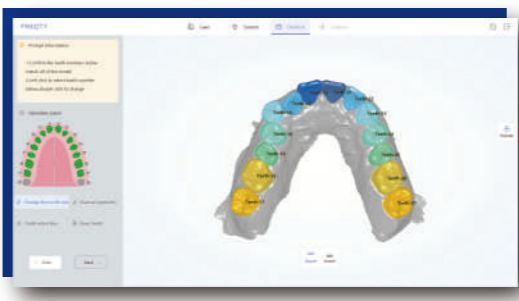
Color Switch

True color jaws, clearly restore details, one click to switch colors, and check model data comprehensively.



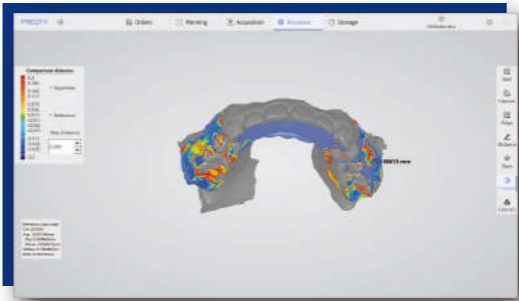
AI Intelligent Scan

Easily identify soft and hard tissues, eliminate redundant data, and make accurate dental models.



Orthodontic Simulation

Generate simulation animations to help doctors and patients communicate, share quickly, and promote orders.



Disease Course Monitoring

Full-cycle diagnosis and treatment monitoring, comparative observation of model differences, simultaneous analysis, comprehensive upgrade of diagnosis and research.



Cuff Tool

Clear cuff data, avoid tissue interference and lock automatically, significantly improving data reliability.

APPLICATIONS



Data Acquisition



CAD - Implant
Surgery Planning



3D Guide Printing



Dental Implant



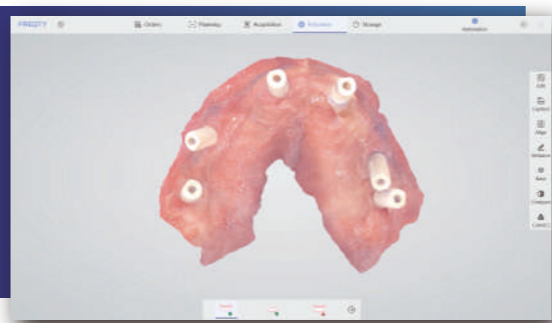
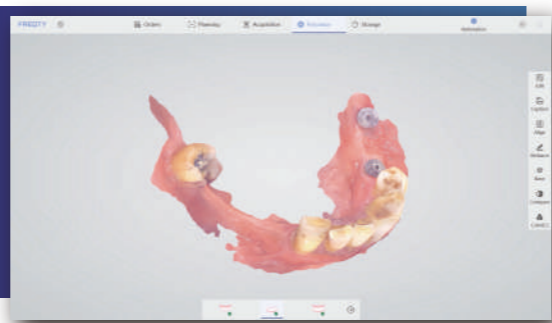
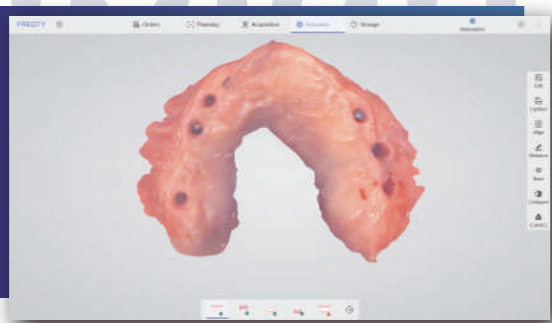
Secondary Data
Acquisition



Make Dental
Crowns



Fitting
Crowns



Data Acquisition



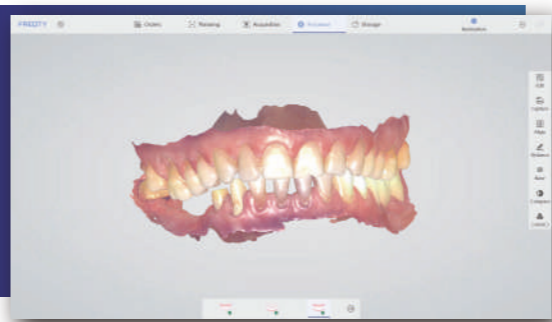
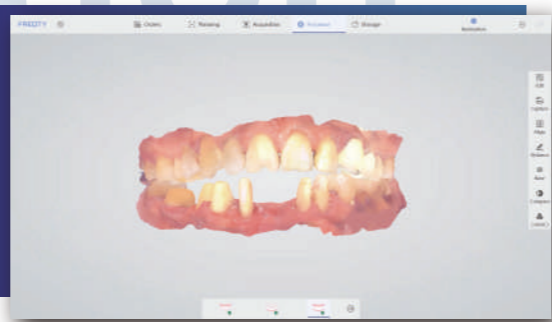
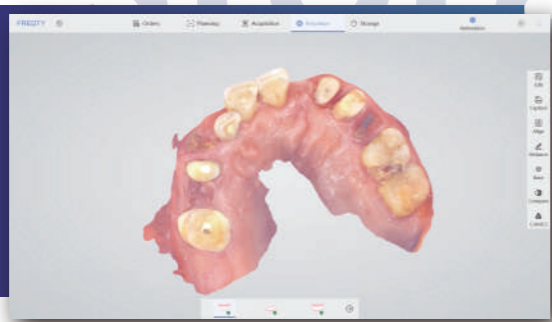
CAD - Restoration
Design



CAM - Crown Milling
- Wear Crowns



Fitting
Dentures



Data Acquisition



CAD - Orthodontic
Plan



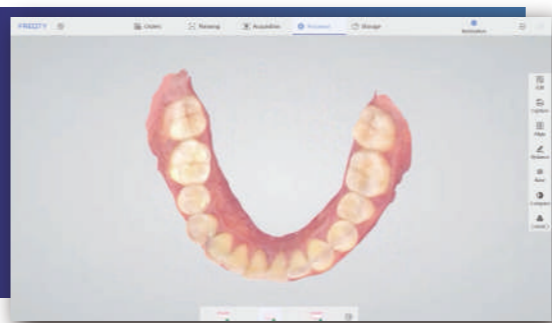
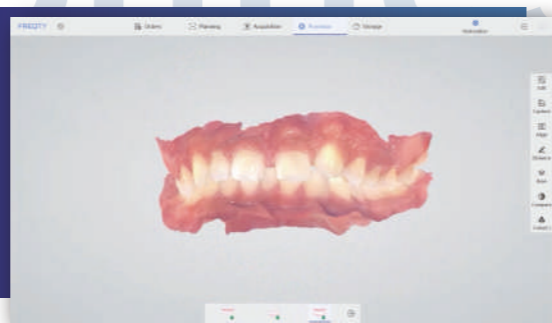
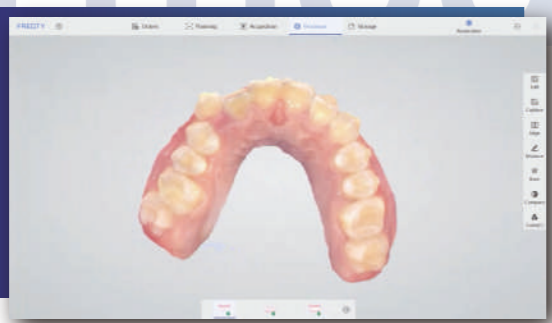
3D Model Printing



Make Aligners



Fitting
Aligners



SPECIFICATIONS

PRODUCT INFORMATION

Category	BSM Scan M5
Anti Fog System	Intelligent Heating
Accuracy	≤7μm
Precision	≤5μm
Handpiece Weight	138g (192g with cable)
Handpiece Dimension	221x27x25mm
Handpiece Enclosure	High-strength Aviation Aluminum Alloy
Scan Field	18x16mm
Scan Depth	0-20mm
True Color	Full HD
Tips	x6 (Autoclavable)
Tip Autoclave Cycle	50-100 Times
Data Interface	USB3.0
Cable Length (m)	1.85m



SOFTWARE

Category	BSM Scan M5
Types of Scanning	Orthodontics, Implant, Restoration
Image Capture	Yes
3D Data Preview	Yes
Output Files	STL, PLY, PTY (encrypted for user)
Cloud Service	Yes
Cloud Service Price	5GB/free
Direct Compatibility with Dental CAD	Exocad*
Main Image Processing Tools	Trim/Edit/Recover/Lock, etc.
Margin Line Drawing	Yes
Occlusal Match	Yes
Undercut	Yes
Data Comparison	Yes
AI Technology	Auto Tissue Remove, Overlap Correct, etc.
Software License	Free
Software Upgrade	Free
Transfer Data with API	Available

*All names, logos, brands and other trademarks featured or referred to within this brochure are the property of their respective trademark holders.

PC REQUIREMENTS

Category	BSM Scan M5
CPU	Intel i7-12700H/Intel i7-11800H or above
RAM	16G/32G
Hard Disk	SSD 512G or above
GPU	RTX2060/RTX3060 or above
Operating System	Windows10/11 64bit
Display	Resolution 1920×1080 and above

*Check the PC Recommendation Catalog on our website for more detail.

WARRANTY

Category	BSM Scan M5
Standard Warranty	2 years
Extended Warranty	2 years more available

