

Technical Parameters

Width*depth*height	570mm*680mm*780mm	Weight	130kg
Cooling system	Automatic air-cooling spindle	Motor	AC servo
Number of axis	5	Voltage/Power	220V/2.6KW
Tool type	Zirconia Milling Bur: φ4mm*(2mm/1mm/0.6mm) Ball-mill, φ4mm*1mm End-mill Resin Milling Bur: φ4mm*(2mm/1mm)		
Automatic tool length detection	✓	Rotation angle	-30°~+40°
Automatic tool life monitoring	✓	Spindle speed	60000RPM
Built-in-burs	6	Fields of application	Dry milling
Environmental temperature	5°C~40°C	Air pressure	>0.65Mpa
Remote control	✓	Monitor	9.7"LCD touch screen

Besmile is a global digital solutions provider for restorative and implant dentistry.

We offer integrated systems—premium CAD/CAM materials, advanced equipment, and precision implant systems—designed to streamline workflows and ensure reliable results.

All core products are developed and manufactured in-house, ensuring consistent quality and continuous innovation.

Trusted by over 1,000 partners in more than 100 countries, we empower dental professionals to create confident, lasting smiles.

Technology creates the best smile.



Chengdu Besmile Biotechnology Co.,Ltd.

www.bsmdental.com
T: +86-28-85317108
E: info@cdbesmile.com

Besmile Dental America Inc.

20311 Valley Blvd, Suite#1, Walnut, CA91789
T: (626)921-5798
E: sales@bsmdentalus.com

Contact Us



@Besmile @besmile_aconia

Intelligent 5-axis Dental Milling Machine

BSM-520D

- 5 Axis
- Dry Milling
- ±0.005 mm
- Open
- Labside



Intelligent 5-Axis Dental Milling Machine

BSM-520D

CAD/CAM Digital Processing



The BSM-520D 5-axis dental milling machine is engineered for labs demanding uncompromising accuracy without sacrificing efficiency.

Featuring 90° vertical milling and ultra-wide B-axis rotation, it handles intricate details with ease, while the 1/3 holder boosts ROI by 20%—perfect for precision-driven production.



Millable Materials



Zirconia



PMMA



Wax



Wood



PEEK

Millable Restorations



Full contour crown



Coping



Inlay/onlay



Veneer



Crown bridge



Zirconia abutment



Zirconia implant bridge



Non-metal frame

Key Features



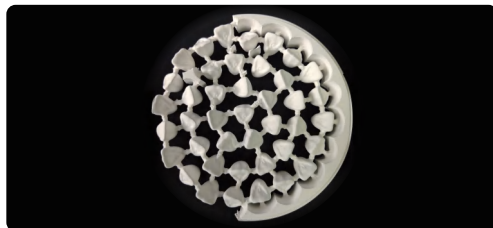
High compatibility



- Wide B-axis rotation (–30° to +40°)
- **90° vertical milling** precisely replicates natural tooth anatomy and surface texture



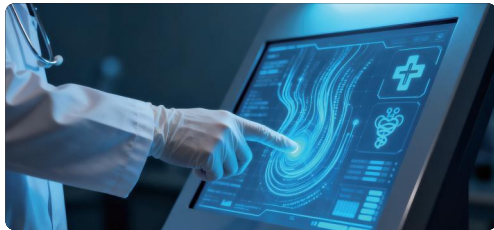
Higher ROI



- 1/3 holder boosts output by 20% per block
- **Dust-proof design** extends machine lifespan



Intelligent Processing



- **Automatic changer for 6 tools** with haptic detection & breakage monitoring
- Integrated PC with **9.7 inch intelligent touch screen**



High Accuracy



- **Digital servo system** with high resolution
- Guaranteed milling accuracy: **±0.005mm**
- ±0.01mm installation accuracy per axis

Milling speed:

zirconia anterior anatomic crown ≈ 12'
zirconia posterior anatomic crown ≈ 17';
zirconia 3-unit crown bridge ≈ 24';

The above data was obtained based on the BSM-520D milling of Aconia 3D Master 14mm.



Excellent Reliability



- **60,000 RPM premium spindle** for high-speed milling
- Industrial-grade **aerometal gantry structure** ensures ultimate reliability