

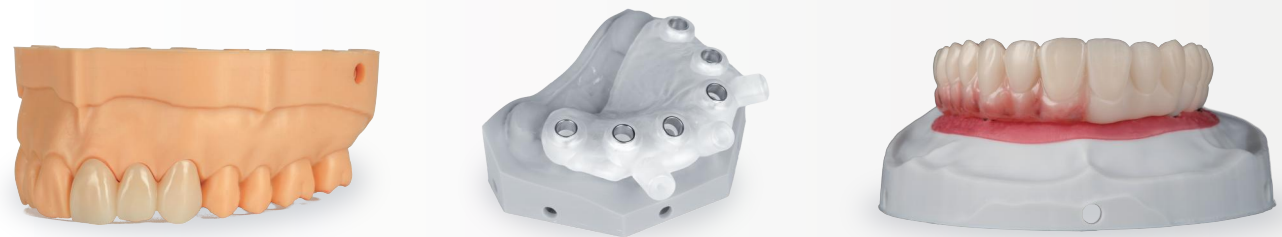
Multi-Material Compatibility

Smart Slicing Software

Multi-language UI, open material parameters, one-click nesting, one-click support — intelligent automation built in.

Wide Material Support

Model resin, surgical guide resin, temporary crown, gingiva resin, and more.



Printing Speed

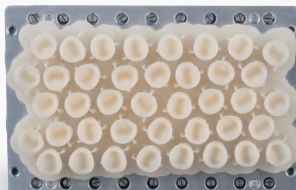
- 10 diagnostic models:
~50 min (avg. 5 min/model)



- 10 surgical guides:
~20 min (avg. 2 min/guide)



- 40 temporary single crowns:
~20 min (avg. 0.5 min/crown)



Print Specifications

Forming Technology	DLP light-curing technology
Wavelength	405 nm
Build Volume	192 × 108 × 110 mm
Z-axis Positioning Accuracy	2 μm
XY Resolution	3840 × 2160
Printing Accuracy	±30 μm
Layer Thickness	0.025 / 0.05 / 0.1 mm
Printing Speed	67 mm/h (max)
Printable Materials	Dental models, implant surgical guides, gingiva resin, temporary crowns, etc.

Software	CHITUBOX Pro
Supported Formats	.STL, .OBJ
Transmission Mode	USB, Wi-Fi

Weight	26 kg
Device Size	380 × 350 × 680 mm
Power Supply	220V / 350W

About Besmile

Besmile is a global digital solutions provider for restorative and implant dentistry.

We offer integrated systems—premium CAD/CAM materials, advanced equipment, and precision implant systems—designed to streamline workflows and ensure reliable results.

All core products are developed and manufactured in-house, ensuring consistent quality and continuous innovation.

Trusted by over 1,000 partners in more than 100 countries, we empower dental professionals to create confident, lasting smiles.

Technology creates the best smile.



Chengdu Besmile Medical Technology Co.,Ltd.,
www.bsmdental.com
T: +86-28-85317108
E: info@cdbesmile.com

Besmile Dental America Inc.
20311 Valley Blvd, Suite I, Walnut, CA 91789
T: (626)921-5798
E: sales@bsmdentalus.com

Contact Us



Precision with Productivity
DP2000 Dental 3D Printer



DP2000 Dental 3D Printer

Industrial Precision for Demanding Practices

BSM-DP2000 is a professional DLP dental 3D printer designed for clinics and high-end dental labs with large-format production needs.

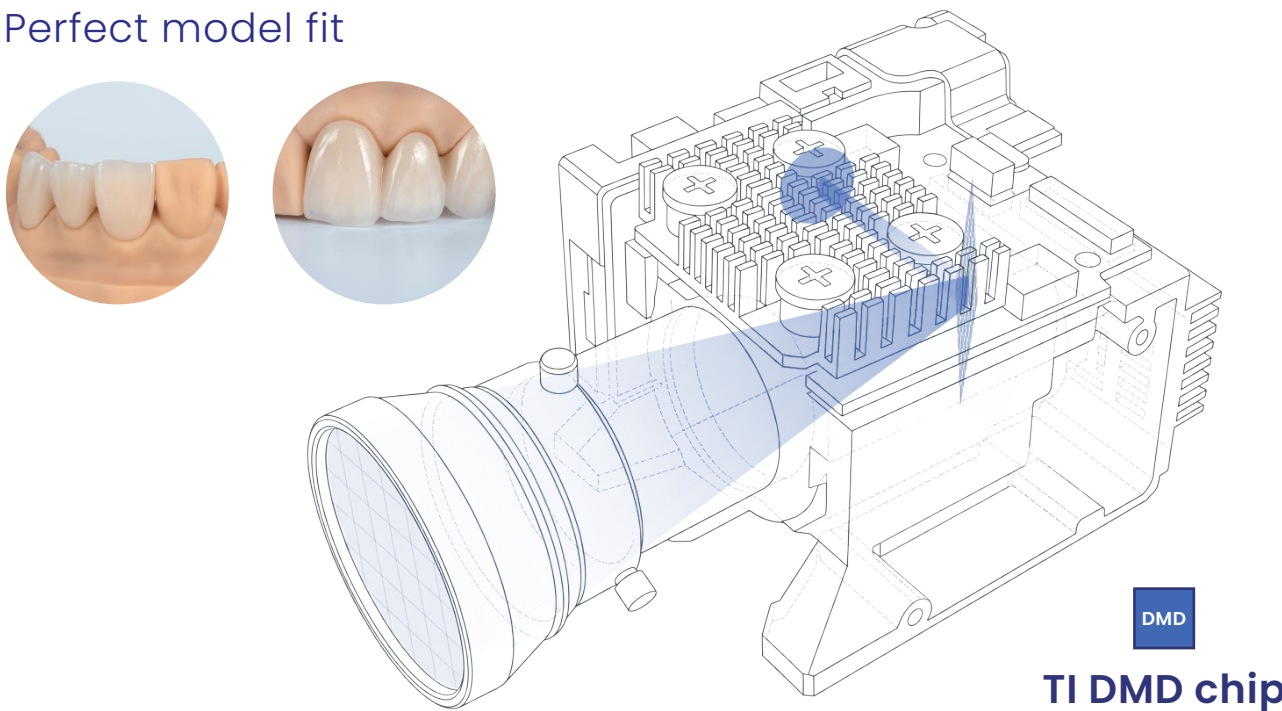
Building on the proven accuracy and stability of the DP-1000, it offers roughly double the build area, enabling more cases per job and significantly higher throughput.

It supports a wide range of dental applications, including implantology, orthodontics, fixed and removable restorations, and aesthetic cases.

±30 µm Printing Accuracy

- Industrial-grade optical system with **TI DMD** chip for ultimate accuracy
- High-Precision DLP Optical Module with over 2 million micro-mirrors enabling ultra-fine pixel control for highly accurate dental anatomy.

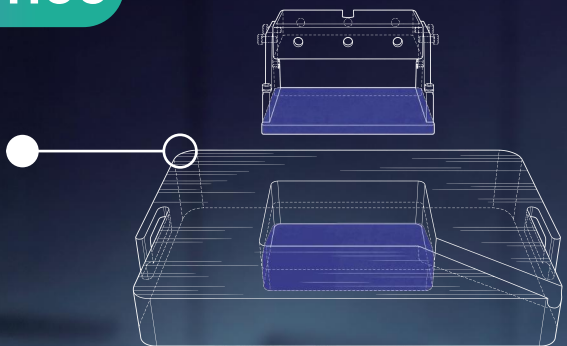
Perfect model fit



Crafted for Excellence

Mini Printing Kit for Temporary Crowns

- Print premium temporary restorations anytime, on demand.

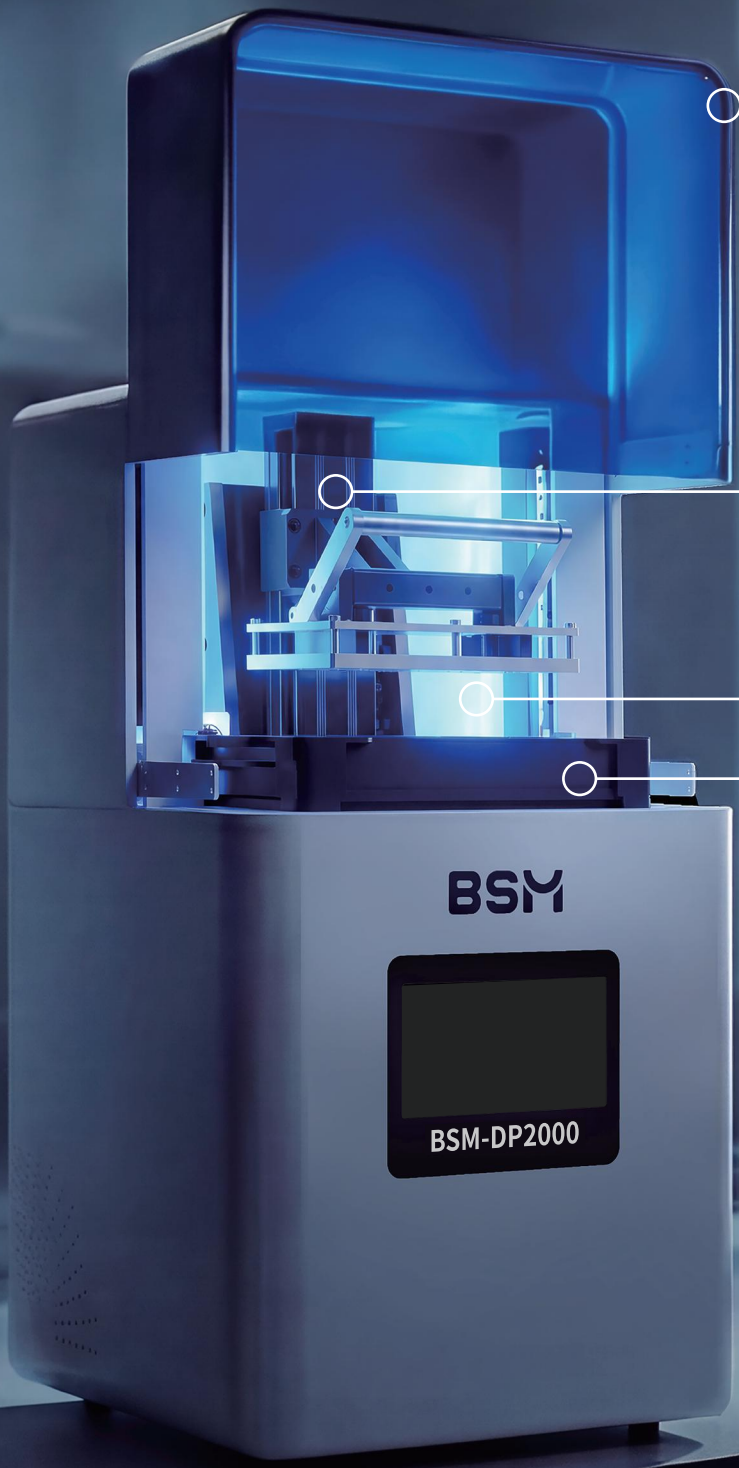


Part Removal Assistant

- Makes part removal effortless.

Bundled Post-Curing Unit

- A professional curing unit comes standard for a complete, streamlined print-to-cure workflow.



Advanced Dust-Proof Optical Design

- Engineered for durability with special design— enabling uninterrupted, contamination-free printing.

Transparent Window

- Real-time visibility for monitoring print progress.

Automatic Lift Door & Futuristic Exterior

- Smooth, convenient operation with an elevated user experience.

P-Grade Precision Motion

- ±2 µm repeat positioning accuracy.

Temperature-Controlled Printing Chamber

- Prevents material deformation for consistently stable results.

Quick-Release Resin Vat

- Swap release film in 30 seconds* and simplify maintenance.