

Technical Parameters

Scanning Technology	Dynamic Staring 3D scanning	Full-Arch Scanning Time	<1 minutes
Total Size	222×33×28mm	Light Source	White LED + Laser
Weight	167g (include the tip, exclude the wire)		
Number of Tips	6 tips (autoclavable)	Language	Chinese & English
Tip Size	87mm×21mm×15mm	Accuracy	±8μm
Scan Field	18mm×16mm	Precision	±6μm
Depth of Field	0-20mm	Multi-Functional Button	Yes
Output Files	STL、PLY、PTY、OBJ	Montion Sensing	Yes
Interface	USB 3.0	Scanning Speed	24 fps

Besmile is a global digital solutions provider for restorative and implant dentistry.

We offer integrated systems—premium CAD/CAM materials, advanced equipment, and precision implant systems—designed to streamline workflows and ensure reliable results.

All core products are developed and manufactured in-house, ensuring consistent quality and continuous innovation.

Trusted by over 1,000 partners in more than 100 countries, we empower dental professionals to create confident, lasting smiles.

Technology creates the best smile.



Chengdu Besmile Medical Technology Co.,Ltd.,

www.bsmdental.com

T: +86-28-85317108

E: info@cdbesmile.com

Contact Us



Intraoral Scanner

BSM SCAN-M5 Pro

- High Accuracy
- Fast Scanning
- Smart Button Control
- Motion Sensing



The innovative dental technology
Your best choice for precision and efficiency

Intraoral Scanner

BSM SCAN-M5 Pro

Key Features

Ultra Stable

Constructed with aerospace-grade low-expansion metal, the optical module effectively resists optical distortion.

Hard Shell

Durable aerospace-grade aluminum alloy housing with excellent wear and corrosion resistance for long-lasting performance.

High Resolution

Upgraded projection chip with lossless transparent transmission technology, achieving a balance between speed and accuracy.

Risk-Free

The scanner tip is made of FDA-certified medical-grade material, ensuring zero operational risk and enhanced intraoral safety

One-Touch Control Effortless Experience



One-touch operation with motion-sensing control, making dental treatment easier and more precise

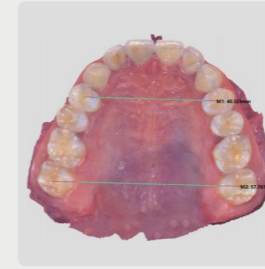
Plug & Play

1.8 m cable unleash your clinical operation

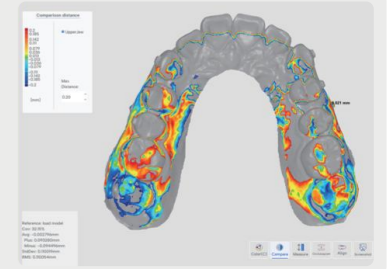


Software Feature

Orthodontics Application

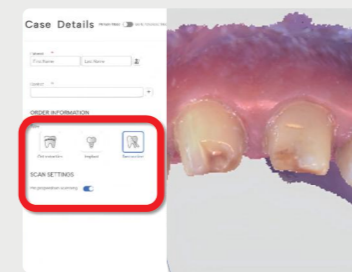


Comparison



Intuitive Visualization

Restoration Application

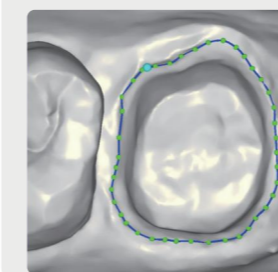
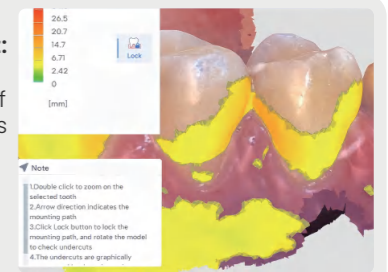


Pre-op Scanning:

Accurate pre- and post-preparation records

Undercut Measurement:

Real-time visualization of insertion paths and seating risks.



Marginline Marker:

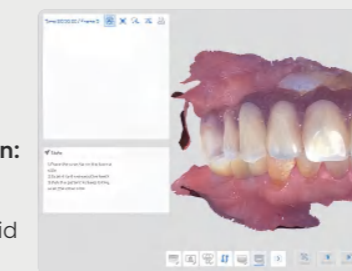
Accurate identification of shoulder margins



Occlusogram:

Automatic bite depth detection with color heat-mapping

Implant Application



Implant Pre-op Scan:

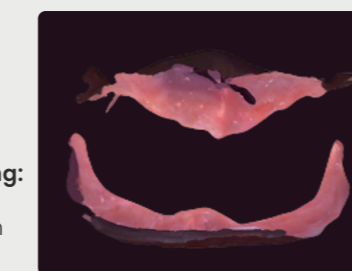
Captures data for immediate loading prosthesis and hybrid abutments.

Interfering Scanning Rod Support:

Specialized for complex, close-spacing implant scenarios.



Geriatric Dentistry



Edentulous Scanning:

Accurate soft tissue capture for full-arch dentures.

Standalone Scanning Mode:

Independent data capture without dependency on existing scans.

